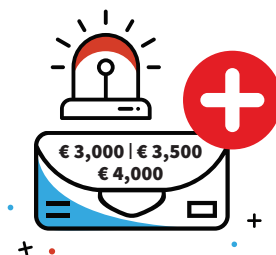


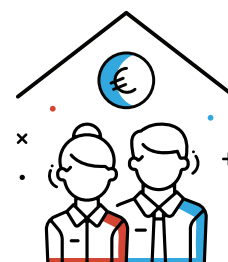
# EMERGENCY FUND FOR SELF-EMPLOYED WORKERS OF € 3,000, € 3,500 OR € 4,000



**FROM:** Ministry of the Economy /  
General Directorate for Small and  
Medium-Sized Enterprises



**HOW MUCH:** Non-repayable aid  
of € 3,000, € 3,500, € 4,000



**TO:** Primarily  
self-employed

## 1 TARGET GROUP

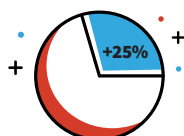
Must meet one of the following conditions



CARRY OUT AN **ACTIVITY**  
IN RELATION WITH THE  
INSURANCE SECTOR



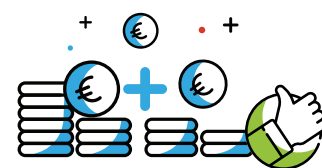
CARRY OUT AN **ACTIVITY**  
ON HIS/HER OWN BEHALF



HOLD MORE THAN 25%  
OF THE COMPANY SHARES



IS A **DIRECTOR**



The aid **can be combined with**  
the other types of aid made  
available in the context of the  
COVID-19 pandemic.

## 2 CUMULATION RULE

## 3 PREREQUISITES



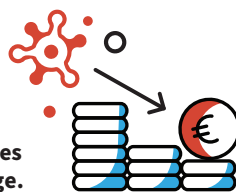
Registered with the  
**CCSS** in that capacity  
on **March 15, 2020**.



Holding all  
**authorisations**  
and **approvals**.



Calculation basis:  
**min 0,5 and max 2,5 times**  
the social minimum wage.



There must be a **direct causal**  
**link** between COVID-19 and the  
**temporary financial difficulties**.

## 4 DEADLINES



Request form online:  
**May 12, 2020**



LE GOUVERNEMENT  
DU GRAND-DUCHÉ DE LUXEMBOURG  
Ministère de l'Économie

Direction générale des classes moyennes

**YOU WILL FIND DETAILED INFORMATION UNDER THE FOLLOWING LINK:**

[guichet.public.lu/en/entreprises/financement-aides/coronavirus/aide-independants-supplementaire.html](http://guichet.public.lu/en/entreprises/financement-aides/coronavirus/aide-independants-supplementaire.html)