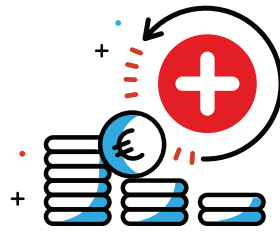


# REPAYABLE AID OF A MAXIMUM OF € 500,000



**FROM:** Ministry of the Economy /  
General Directorate for Small  
and Medium-Sized Enterprises

**HOW MUCH:** Repayable aid  
of a maximum of € 500,000

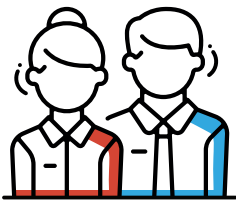
**TO:** Companies and self-employed  
persons with establishment permit

## 1 TARGET GROUP

Commerce / Crafts / Industry

## 2 ALLOWABLE COSTS

Valid from March 15 to May 15, 2020



### NATURAL PERSONS

established in Luxembourg, main activity / self-employed

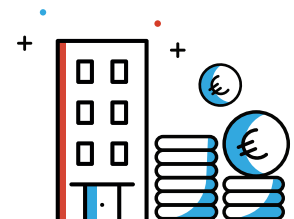


### LEGAL PERSONS



### PERSONNEL EXPENSES:

max 2,5 x minimum  
wage / employee



### RENTAL COSTS:

max € 10,000  
month / company

## 3 PREREQUISITES



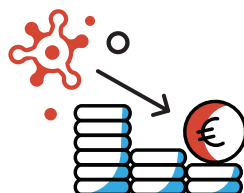
Active in one of the **target groups**.



The company exercised its **economic activity** already, before the unforeseeable event occurred.



The business must have **temporary** financial difficulties.



There must be a **direct causal link** between COVID-19 and the temporary financial **difficulties** of the business.



LE GOUVERNEMENT  
DU GRAND-DUCHÉ DE LUXEMBOURG  
Ministère de l'Économie

Direction générale des classes moyennes

**YOU WILL FIND DETAILED INFORMATION UNDER THE FOLLOWING LINK:**

[guichet.public.lu/en/entreprises/financement-aides/coronavirus/aides-difficultes-financieres-temporaires.html#bloub-1](https://guichet.public.lu/en/entreprises/financement-aides/coronavirus/aides-difficultes-financieres-temporaires.html#bloub-1)