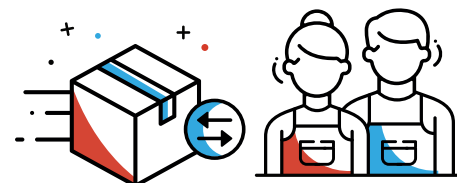


AID OF € 12,500 FOR BUSINESSES WITH 10-20 EMPLOYEES AND LOSS IN TURNOVER

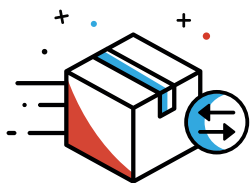


FROM: Ministry of the Economy /
General Directorate for Small
and Medium-Sized Enterprises

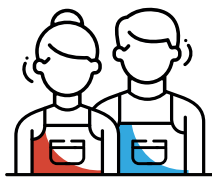
HOW MUCH: Non repayable-aid
of a maximum of € 12,500

TO: Commercial or
craft undertakings

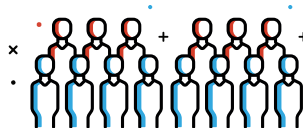
1 PERSONS CONCERNED



COMMERCES



CRAFTS



10 - 20

Number of employees:
10 - 20



Affiliated as main activity
at the **CCSS**

3 DEADLINES



Request form online:
April 28, 2020



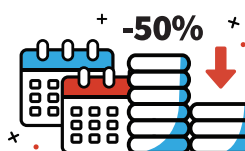
Valid **business permit**



Annual turnover of **€ 15,000**



Balance sheet total
of max. **€ 4,000,000**



Estimated loss in turnover of at least 50% during the period between
15 April 2020 and 15 May 2020



LE GOUVERNEMENT
DU GRAND-DUCHÉ DE LUXEMBOURG
Ministère de l'Économie

Direction générale des classes moyennes

YOU WILL FIND DETAILED INFORMATION UNDER THE FOLLOWING LINK:

guichet.public.lu/en/entreprises/financement-aides/coronavirus/aide-urgence-10-salaries.html