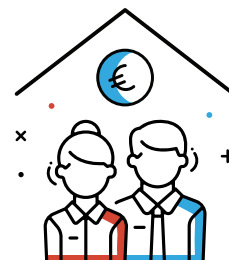
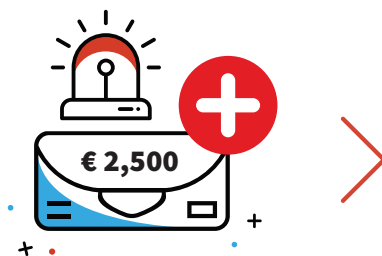


# AID OF € 2,500 FOR THE SELF-EMPLOYED



**FROM:** Ministry of the Economy / General Directorate for Small and Medium-Sized Enterprises

**HOW MUCH:** Non-repayable aid of € 2,500

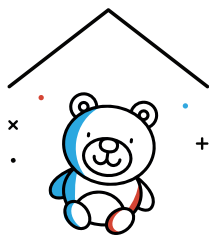
**TO:** Self-employed

## 1 TARGET GROUP



### PROFESSIONAL SELF-EMPLOYED WORKERS

affiliated with the social security scheme.



### CHILDMINERS

with governmental accreditation.



Registered with the CCSS in that capacity on **March 15, 2020**.

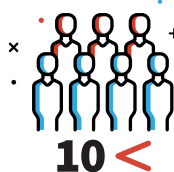


Holding all **authorisations and approvals**.

## 3 DEADLINES



Request form online:  
**April 8, 2020**



Employing less than **10 people**.

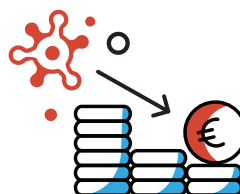


Calculation basis: **max 2,5 times the social minimum wage**.



LE GOUVERNEMENT  
DU GRAND-DUCHÉ DE LUXEMBOURG  
Ministère de l'Économie

Direction générale des classes moyennes



There must be a **direct causal link** between COVID-19 and the **temporary financial difficulties**.

**YOU WILL FIND DETAILED INFORMATION UNDER THE FOLLOWING LINK:**

[guichet.public.lu/en/entreprises/financement-aides/coronavirus/aide-independants.html](https://guichet.public.lu/en/entreprises/financement-aides/coronavirus/aide-independants.html)